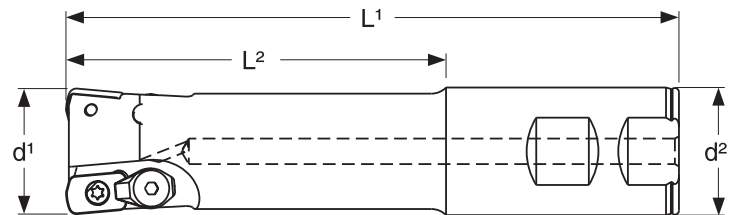
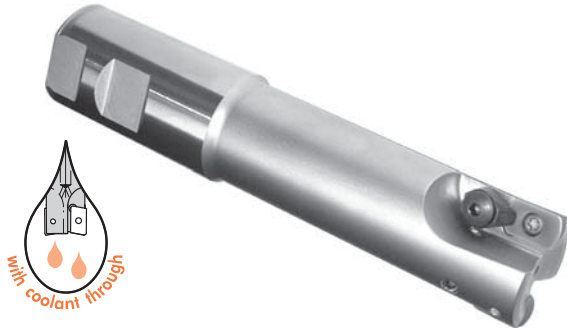


XD95

High Feed Milling Cutters

Remarkably high metal removal rates are delivered by the new XD95 High Feed mills. Feed ranges of 0.050" to 0.060" per tooth are easily achieved in tool and mold steels with reduced chatter and vibration during machining of deep cavities. The XD95 High Feed mills will completely change your approach to material removal.

- High feed rates
- Reduced power consumption
- Reduced chatter / vibration
- Smooth cutting action even while fully extended from spindle
- Depth of cut up to .060"
- New nickel finish for improved surface wear and chip evacuation
- Excellent grade selection (9 grades available)
- Innovative insert design with reinforced cutting edge
- Unique top clamp design provides excellent insert stability for extended tool life



End Mills with Coolant

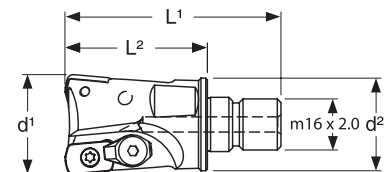
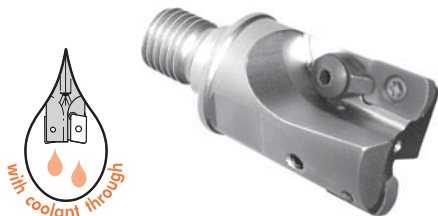
Designation	d ¹	d ²	l ¹	l ²	Flutes	Insert	Clamp	Clamp Screw	Torx Screw	Torx Wrench
XD95HF-1250C	1.25	1.25	6.00	3.71	2	XDGW-1604H0 XDGW-1604H20 XDGW-1604TH05 XDGW-1604TH20	RT892	RT898	TX15S	T15F
XD95HF-1500C	1.50	1.25	6.00	3.71	3					

Remember to use COPASLIP® anti-seize compound on all insert screws

Cylindrical Shank End Mills with Coolant

Designation	d ¹	d ²	l ¹	l ²	Flutes	Insert	Clamp	Clamp Screw	Torx Screw	Torx Wrench
XD95HFCY-1250-XLC	1.250	1.250	10.00	3.50	2	XDGW-1604H0 XDGW-1604H20 XDGW-1604TH05 XDGW-1604TH20	RT892	RT898	TX15S	T15F
XD95HFCY-1500-XLC	1.500	1.250	10.00	2.50	3					

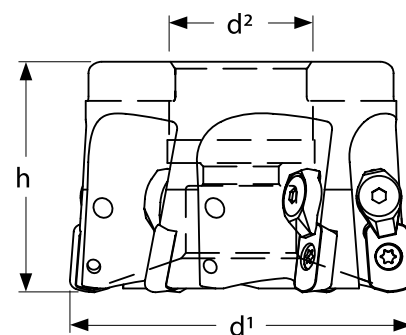
Remember to use COPASLIP® anti-seize compound on all insert screws



Screw On Milling Cutters

Designation	d ¹	d ²	l ¹	l ²	Flutes	Insert	Clamp	Clamp Screw	Torx Screw	Torx Wrench
XD95HF-1250-TS	1.250	1.142	2.65	1.75	2	XDGW-1604H0 XDGW-1604H20 XDGW-1604TH05 XDGW-1604TH20	RT892	RT898	TX15S	T15F
XD95HF-1500-TS	1.500	1.142	3.03	2.12	3					

Remember to use COPASLIP® anti-seize compound on all insert screws



Face Mills

Designation	d ¹	d ²	l ²	Flutes	Insert	Clamp	Clamp Screw	Torx Screw	Torx Wrench
XD95HF-2000	2.00	.75	1.75	4	XDGW-1604H0 XDGW-1604H20 XDGW-1604TH05 XDGW-1604TH20	RT892	RT898	TX155	T15F
XD95HF-2500	2.50	1.00	1.75	5					
XD95HF-3000	3.00	1.25	2.00	6					
XD95HF-4000	4.00	1.50	2.00	7					

Remember to use COPASLIP® anti-seize compound on all insert screws

Insert Grade Descriptions:

TP765A (HC-P25)

First choice for steel applications. Good balance of wear resistance, toughness and edge strength. The coating is AlTiN for high performance milling in steel. Must be run dry.

TP745T (HC-P40)

For steel applications where greater toughness is required (i.e. scale or severe interruption). The substrate for this grade is very tough, making it the perfect choice for unfavourable conditions. The coating is TiAlN for high performance milling in steel. This grade can be run dry or wet.

TP765T (HC-P25)

Similar to TP765A using the same substrate but with TiAlN coating. This grade can be run dry or wet.

TP745A (HC-P40)

Similar to TP745T using the same tough substrate but with AlTiN coating for harder materials and high temperature conditions. This grade must be run dry.

TK532T (HC-K15)

For machining of cast irons and austenitic (300 and PH series) stainless steels. High wear resistance, with a micro grain substrate, suitable for abrasive materials. The coating is TiAlN. This grade can be run dry or wet.

TK532A (HC-K15)

Very similar to TK532T but with AlTiN coating. This grade must be run dry.

TK209A (HC-K30)

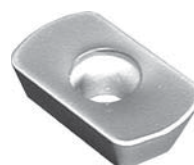
Very wear resistant AlTiN grade with a micro grain substrate designed for machining of hardened steels and chilled cast irons. High cutting speed can be achieved even on pre-hardened mold and die steels.

TK209T (HC-K30)


Very similar to TK209A but with TiAlN coating.

TK532 (HW-K15)

This uncoated grade is for machining of aluminum and other non-ferrous materials. Also suitable for short chipping cast irons when an uncoated grade is desired.



XD95 Inserts

Insert	Designation	Dimensions							TP7	TP7	TP7	TP7	TK5	TK5	TK2	TK2		TK5
		l	s	r	r ¹	d	d ¹	Hone	Coated								Uncoated	
	XDGW-1604H0							--										■
	XDGW-1604H20	.625	.875	.078	.375	.375	.160	.002"					■	■	■	■		
	Inserts with T-Land .010" x 20°																	
	XDGW-1604TH05							.0005"	■	■								
	XDGW-1604TH20	.625	.875	.078	.375	.375	.160	.002"			■	■						