

TV Carb

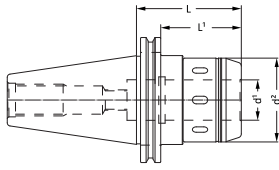
NEW!

1/2" diameter capacity milling chucks!



- ✓ Slender 1.10" outside diameter of locknut
- ✓ Amazing 185 ft-lb gripping force
- ✓ Available in CV40, HSK-A63 and Straight Shank tools
- ✓ Precise to 0.0002" T.I.R.
(3xD away from the nose of the chuck)
- ✓ Precision made in Italy
- ✓ Chucks with 3/4" & 1-1/4" capacity also available

TV Carb Milling Chucks

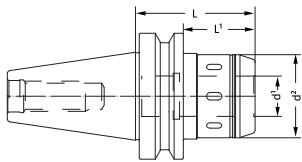


CV40 Milling Chucks

Designation	d ¹	d ²	L	L ¹
CV40MC-0500-2.50	.500	1.10	2.50	1.25
CV40MC-0500-4.00			4.00	2.75
CV40MC-0500-6.00			6.00	4.75
CV40MC-0750-3.00	.750	1.89	3.00	2.25
CV40MC-0750-5.00			5.00	4.25
CV40MC-1250-4.25	1.250	2.59	4.25	--
CV40MC-1250-5.50			5.50	--

CV50 Milling Chucks

Designation	d ¹	d ²	L	L ¹
CV50MC-0750-3.00	.750	1.89	3.00	2.25
CV50MC-0750-6.00			6.00	4.56
CV50MC-1250-3.25	1.250	2.59	3.25	2.50
CV50MC-1250-6.50			6.50	5.75



BT40 Milling Chucks

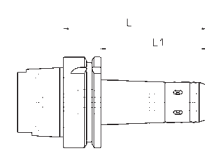
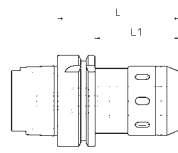
Designation	d ¹	d ²	L	L ¹
BT40MC-0750-2.50	.750	1.89	2.50	1.45
BT40MC-1250-3.50	1.250	2.59	3.50	---

BT50 Milling Chucks

Designation	d ¹	d ²	L	L ¹
BT50MC-0750-3.25	.750	1.89	3.25	1.85
BT50MC-1250-3.75	1.250	2.59	3.75	2.25

Collets for Milling Chucks - Inch

Designation	OD Dia.	ID Dia.	L
MC050-0125	1/2	1/8	1.73
MC050-0188		3/16	
MC050-0250		1/4	
MC050-0312		5/16	
MC050-0375		3/8	
MC075-0250	3/4	1/4	1.97
MC075-0312		5/16	
MC075-0375		3/8	
MC075-0437		7/16	
MC075-0500		1/2	
MC075-0563		9/16	
MC075-0625		5/8	



HSK-A63 Milling Chucks

Designation	d ¹	d ²	L	L ¹
HSK-A63MC-0500-2.75	.500	1.10	2.75	1.73
HSK-A63MC-0500-4.00			4.00	2.91
HSK-A63MC-0750-3.50			3.50	2.32
HSK-A63MC-0750-5.00	.750	1.89	5.00	3.90
HSK-A63MC-1250-4.50			4.50	--

HSK-A100 Milling Chucks

Designation	d ¹	d ²	L	L ¹
HSK-A100MC-0750-4.00	.750	1.89	4.00	2.80
HSK-A100MC-0750-6.00			6.00	4.86
HSK-A100MC-1250-4.50	1.250	2.60	4.50	3.19
HSK-A100MC-1250-6.50			6.50	4.86



1/2" Capacity Straight Shank Milling Chucks

Designation	d ¹	d ²	d ³	OAL
SS075MC-0500-7.00	.500	1.10	.750	7.00
SS100MC-0500-7.00			1.000	7.00
SS100MC-0500-9.00			1.000	9.00

3/4" Capacity Straight Shank Milling Chucks

Designation	d ¹	d ²	d ³	OAL
SS100MC-0750-9.00	.750	1.89	1.000	9.00
SS125MC-0750-9.00			1.250	9.00

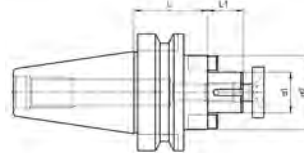
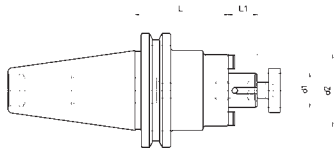
Collets for Milling Chucks - Inch

Designation	OD Dia.	ID Dia.	L
MC125-0250	1.1/4	1/4	2.48
MC125-0312		5/16	
MC125-0375		3/8	
MC125-0437		7/16	
MC125-0500		1/2	
MC125-0563		9/16	
MC125-0625		5/8	
MC125-0750		3/4	
MC125-0875		7/8	
MC125-1000		1	

Metric Milling Chuck Collets available on request

Coolant through shell arbors used with coolant through face mills are designed to **BLAST AWAY** the effects of thermal shock!

- Maximize cutting parameters!
- Maximize insert life!
- Maximize profits!
- Minimize thermal shock!
- Minimize possible re-cutting of chips!
- Superior surface finishes!

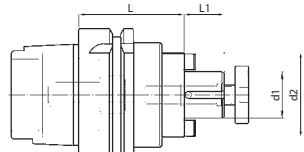
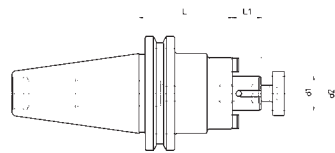


CV40 with Coolant Through

Designation	d ¹	d ²	L	L ¹	lbs
CV40SM-0750-2.00	.750	1.570	2.000	.680	1.540
CV40SM-0750-4.00			4.000		1.980
CV40SM-1000-2.00	1.000	1.960	2.000	.680	1.980
CV40SM-1000-4.00			4.000		2.640
CV40SM-1250-2.25	1.250	2.360	2.250	.680	3.300
CV40SM-1250-4.00			4.000		3.960
CV40SM-1500-2.25	1.500	2.750	2.250	.940	5.720
CV40SM-1500-4.00			4.000		6.380

BT40 with Coolant Through

Designation	d ¹	d ²	L	L ¹	lbs
BT40SM-0750-2.00	.750	1.570	2.000	.680	1.540
BT40SM-0750-4.00			4.000		3.960
BT40SM-1000-2.00	1.000	1.960	2.000	.680	1.980
BT40SM-1000-4.00			4.000		4.840
BT40SM-1250-2.25	1.250	2.360	2.250	.680	3.300
BT40SM-1250-4.00			4.000		5.940



CV50 with Coolant Through

Designation	d ¹	d ²	L	L ¹	lbs
CV50SM-0750-2.00			2.000		5.060
CV50SM-0750-4.00	.750	1.570	4.000	.680	6.160
CV50SM-0750-6.00			6.000		9.900
CV50SM-1000-2.00			2.000		5.500
CV50SM-1000-4.00	1.000	1.960	4.000	.680	6.820
CV50SM-1000-6.00			6.000		12.100
CV50SM-1250-2.25			2.250		7.480
CV50SM-1250-4.00	1.250	2.360	4.000	.680	8.800
CV50SM-1250-6.00			6.000		14.300
CV50SM-1500-2.25			2.250		8.360
CV50SM-1500-4.00	1.500	3.460	4.000	.940	9.460
CV50SM-1500-6.00			6.000		16.500

HSK-A63 Shell Mill Holders with Coolant Through

Designation	d ¹	d ²	L	L ¹
HSK-A63SM-0750-2.00	.750	1.575	2.000	
HSK-A63SM-0750-4.00			4.000	
HSK-A63SM-1000-2.00	1.000	1.969	2.000	.689
HSK-A63SM-1000-4.00			4.000	
HSK-A63SM-1250-2.25	1.250	2.362	2.250	
HSK-A63SM-1250-4.00			4.000	

HSK-A100 Shell Mill Holders with Coolant Through

Designation	d ¹	d ²	L	L ¹
HSK-A100SM-0750-2.25	.750	1.575	2.250	
HSK-A100SM-0750-4.00			4.000	
HSK-A100SM-1000-2.25	1.000	1.969	2.250	.689
HSK-A100SM-1000-4.00			4.000	
HSK-A100SM-1250-2.50	1.250	2.362	2.500	
HSK-A100SM-1250-4.00			4.000	
HSK-A100SM-1500-2.50	1.500	3.465	2.500	.945
HSK-A100SM-1500-4.00			4.000	